

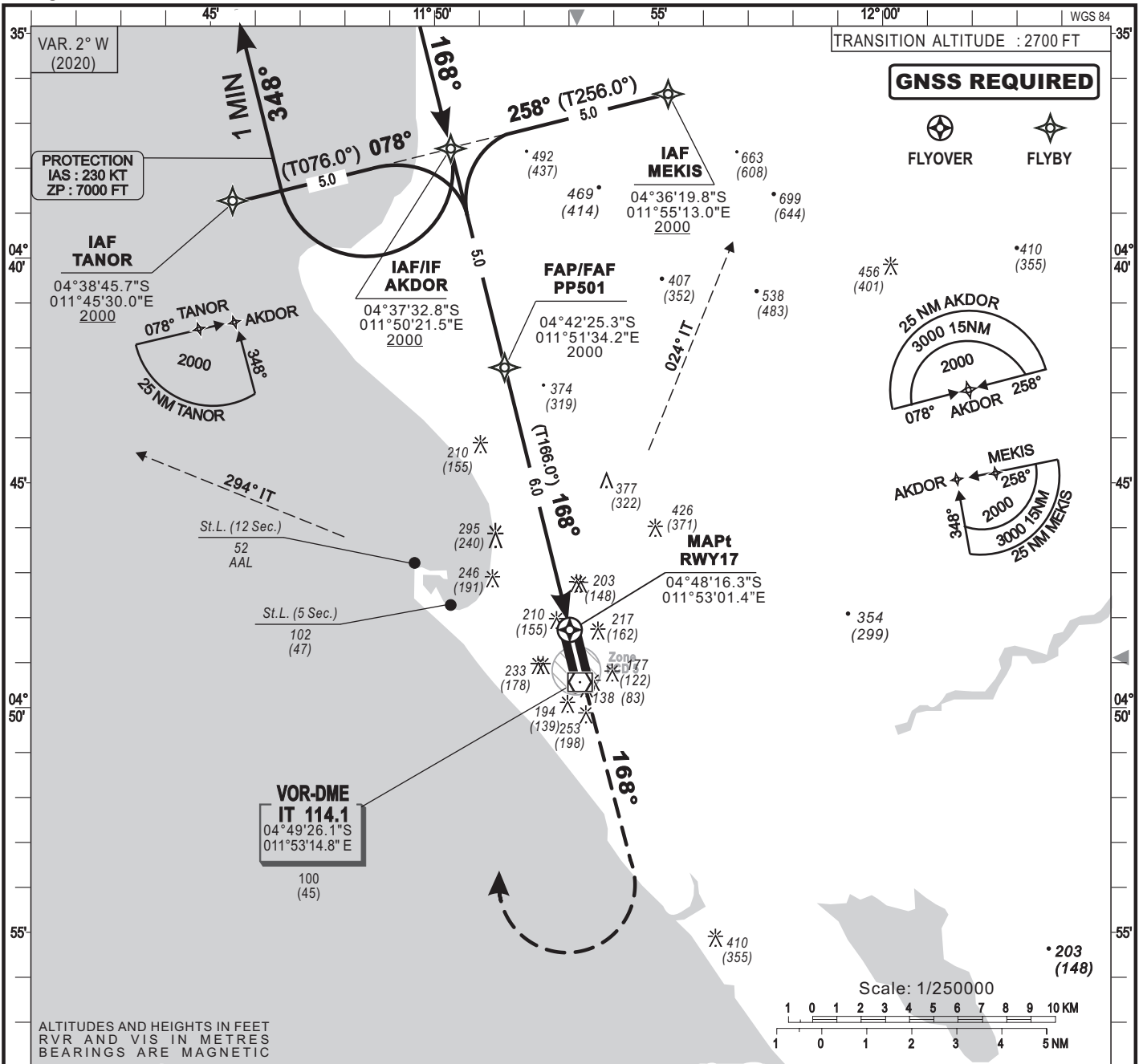
**INSTRUMENT APPROACH CHART**  
Categories A-B-C-D

ELEV.: 55  
THR.: 55

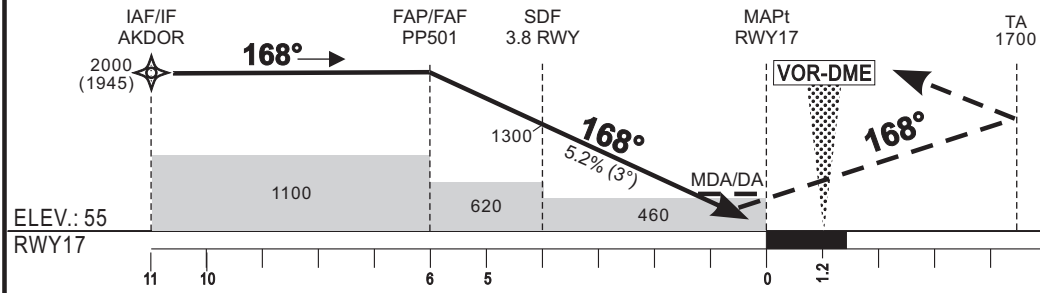
APP: Pointe Noire Tower 124.3  
TWR: Pointe Noire Tower 124.3

**POINTE NOIRE (FCPP)**  
RNAV<sub>(GNSS)</sub> RWY17

HEIGHTS RELATED TO THR 17 ELEVATION



Distance FAF-MAPt (NM)	FAP/FAF	8	7	6	5	4	3	2
Altitude (ft)	2000		2000	1700	1380	1060	745	



**Missed approach:** Climb straight on runway axis. At 1700 ft QNH, turn right climbing 2000 FT QNH, and join IAF TANOR. Do not turn before the MAPt.

CAT	LNAV				LNAV/VNAV				CIRCLING (*)				RVR for take-off CATA-B-C : 400 CAT D : 400
	OCA (OCH)	MDA MDH	RVR(1)	RVR(2)	OCA (OCH)	DA DH	RVR(1)	RVR(2)	OCA (OCH)	MDA MDH	VH		
A	456 (401)	460 (410)	900	1500	445 (390)	450 (390)	900	1500	528 (473)	530 (480)	1500	<b>Timing</b> <b>FAF/THR</b> <b>6 NM</b> KT MIN SEC KT MIN SEC 90 4 Min 00 140 2 Min 34 100 3 Min 36 150 2 Min 24 110 3 Min 16 160 2 Min 15 120 3 Min 00 170 2 Min 07 130 2 Min 46 180 2 Min 00	
B	456 (401)	460 (410)	1000	1500	445 (390)	450 (390)	1000	1500	590 (535)	590 (540)	1600		
C	456 (401)	460 (410)	1000	1800	445 (390)	450 (390)	1000	1800	820 (765)	820 (770)	2400		
D	456 (401)	460 (410)	1400	2000	445 (390)	450 (390)	1400	2000	820 (765)	820 (770)	3600		

**Notes:** (1) With approach lights - (2) Without approach lights - (\*) Daytime only - OCH and MDH AAL  
- Minimum temperature: 15°C.